

Fiber Termination Wall Box

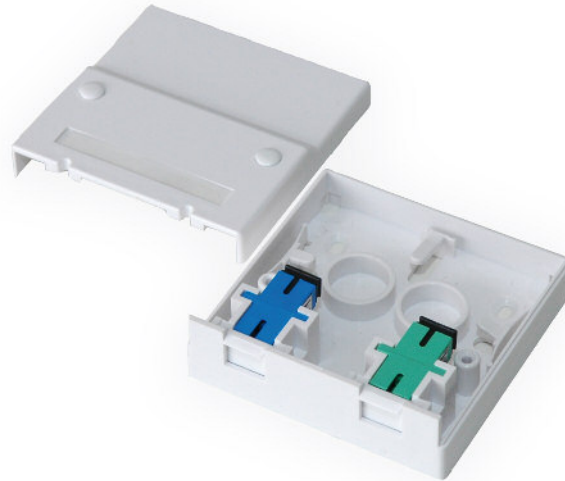
FTWB2WOSTS with Shutter

Field of Application

Designed for FTTH applications, the Wall Outlet Mini is used to terminate optical cables to pigtails at the subscriber' s premises. It is mounted on the wall. The cable is fed to the wall outlet from the top side, bottom side or from the back. A patchcord leads from the wall outlet to the active equipment (CPE - Customer Premises Equipment)

Features

- Compact design
- Rear and bottom cable entry
- Integrated shutter
- Labelling field



Product description

Fiber Termination Wall Box

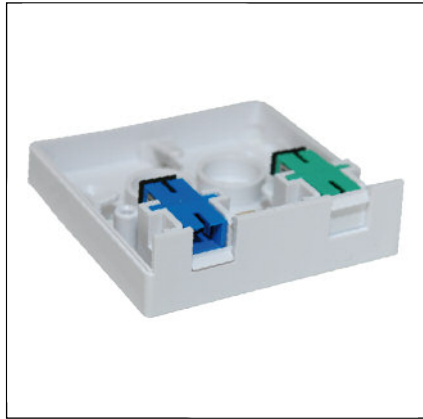
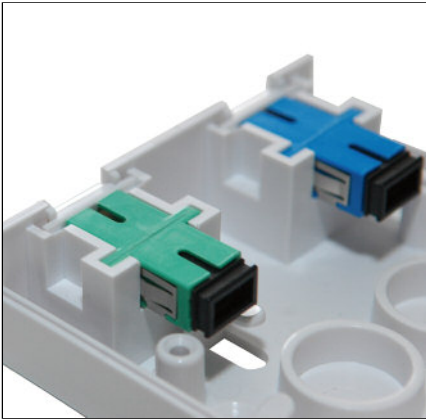
The Fiber Termination Wall Box is used to terminate optical installation cables to pigtails at the subscriber' s premises. It is mounted on the wall. The cable is fed to the wall outlet from the bottom side or from the back. The wall outlet consists of a body and a cover. The body is fixed to the wall with screws and is used for entrance and routing of the optical installation cable and mounting of optical adapters as well as a splice protection sleeve. Heat-shrink splice protectors or cold splice protectors (mechanical splices) can be fixed easily into the cassette body. A cover protects the contents of the wall outlet and is fixed to the wall outlet without screws. At the adapter side, a spring shutter is integrated into the Fiber Termination Wall Box to ensure laser and dust protection

Technical specifications

Material	ABS
Color	White (RAL 9003)
Operating temperature	-25°C to +50°C
Flammability	Non-flammable
IP Protection class	IP5x
Dimensions	86mm x 86mm x 27.5mm (LxWxH)
Weight	56 grams (net.) / 66 grams (gross.)



Pictures



Adapter mounting

Adapters with flange are used for the Fiber Termination Wall Box

Integrated shutter

An integrated spring shutter guarantees eye and dust protection

Cover

Assembled Fiber Termination Wall Box with cover and labeling area

Packing

The wall outlet is protected with a plastic bag including mounting kit

Minimum order quantity: 100 pcs.

Scope of delivery

1 pc Wall Outlet body
1 pc Mounting Kit
1-2 pcs optical adapters (if ordered)
1-2 pcs pigtails (if ordered)

All assembled versions of the Wall Outlet Standard include inserted Adapters as well as dismantled and inserted pigtails. Length of pigtail: 1 meter.

Ordering Information

Empty Wall Outlet

Description	Type	ec-Article Nr.:
Fiber Termination Wall Outlet empty for 2 SCsx or 2 LCdx adapters	FTWB2WOSTS/E2SCSX	EC05.200040.001

Assembled with adapters only

Fiber Termination Wall Outlet with 1 SCsx/UPC adapter	FTWB2WOST/1SCUSX	EC05.200040.002
Fiber Termination Wall Outlet with 1 SCsx/APC adapter	FTWB2WOST/1SCASX	EC05.200040.003
Fiber Termination Wall Outlet with 1 SCsx/UPC and 1 SCsx/APC adapter	FTWB2WOST/1SCU1SCASX	EC05.200040.004

Assembled with adapters and pigtails

Fiber Termination Wall Outlet with 1 SCsx/UPC adapter + pigtail	FTWB2WOST/1SCUSX-1PTU	EC05.200040.005
Fiber Termination Wall Outlet with 1 SCsx/APC adapter + pigtail	FTWB2WOST/1SCASX-1PTA	EC05.200040.006
Fiber Termination Wall Outlet with 1 SCsx/UPC and 1 SCsx/APC adapter + 2 pigtails		EC05.200040.007