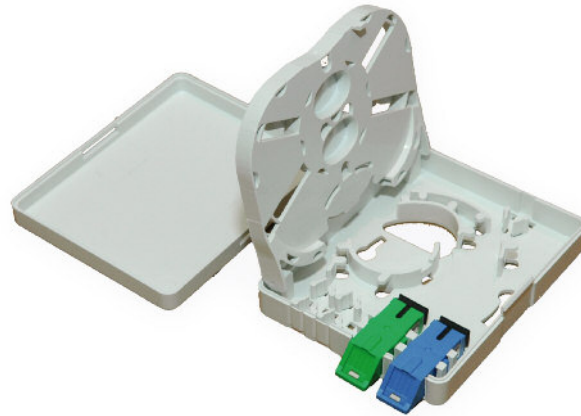


Wall Outlet Mini

TBWOS for SCsx adapters

Field of Application

Designed for FTTH applications, the Wall Outlet Mini is used to terminate optical cables to pigtails at the subscriber' s premises. It is mounted on the wall. The cable is fed to the wall outlet from the top, bottom side or from the back. A patchcord leads from the wall outlet to the active equipment (CPE - Customer Premises Equipment)



Features

- Hinged/detachable splice cassette
- Compact design
- Separate fiberguiding
- Suitable for heat-shrinkable splice-protection as well as for mechanical splice protection

Components

Wall Outlet Mini TBWOS

The Wall Outlet Mini is used to terminate optical installation cables to pigtails at the subscriber' s premises. It is mounted on the wall. The cable is fed to the wall outlet from the top side, bottom side or from the back. The wall outlet consists of body, splice cassette, and cover. The body is fixed to the wall with screws and is used for entrance and routing of the optical installation cable and mounting of optical adapters. The purpose of the splice cassette is to take excess lengths of the incoming optical cables as well as the pigtails and to fix splice protectors (1-2 pcs). Heat-shrink splice protectors or cold splice protectors (mechanical splices) can be fixed easily on the splice cassette. A cover protects the contents of the wall outlet and is fixed to the wall outlet without screws. Optionally a customer logo can be placed on the cover. The construction of the wall outlet ensures a minimum bending radius for the pigtails of $R=20\text{ mm}$. The wall outlet is made of White (RAL 9010) High Heat and High Impact Resistance polystyrene (PS454C).

Optical Adapter

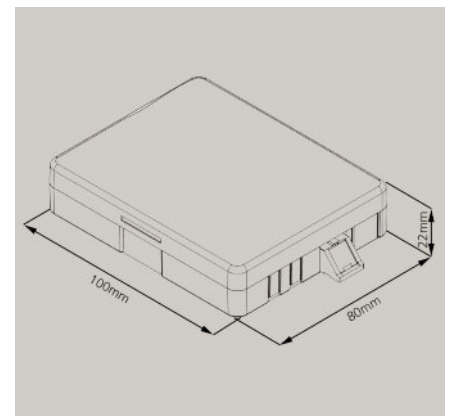
SCsx adapter type (UPC or APC Version) with plastic housing and ceramic sleeve (ZrO₂); IEC 61754-4, TIA 604-3 compliant

Pigtail

Semi-TB construction with 900µm outer diameter and 1m length. Fiber type 9/125, G657.A, IEC 61754-4, TIA 604-3 compliant
UPC Version (IL<=0,3dB; RL>=-50dB) or APC Version (IL<=0,3dB; RL>=-65dB)

Technical specifications

Material	ABS
Color	White (RAL 9010)
Operating temperature	-40°C to +75°C (acc. EN 60068-2-1 and EN 60068-2-1)
Flammability	UL94 HB
IP Protection class	IP53 (according IEC 60529)
Dimensions	100mm x 80mm x 22mm (LxWxH)
Weight	60 grams (without adapters and pigtails)



Accessories

Heat-shrink splice protection (fusion splice protection)

The Wall Outlet Mini is designed to use heat-shrink splice protection sleeves with a length of 40mm and a diameter of 2.5mm.

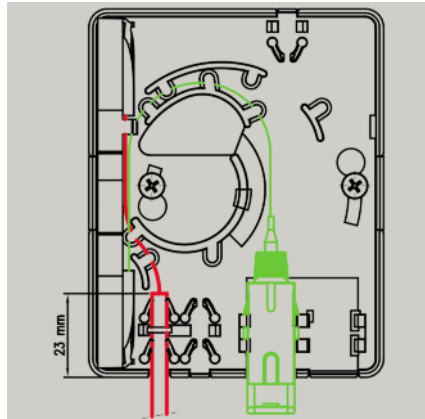
Cold splice protection (mechanical splice protection)

The Wall Outlet Mini is designed to use cold splice protection sleeves with a dimension of 4.5mm x 4.5mm x 4.5mm. This item has to be ordered separately

Scope of delivery

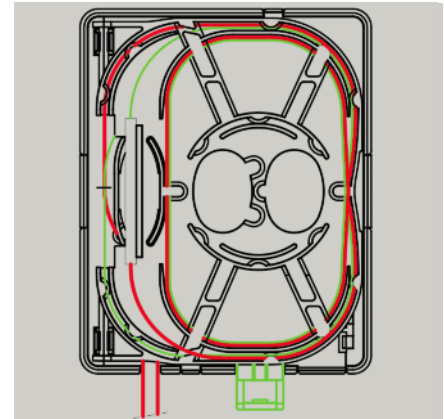
- 1 pc Wall Outlet body
- 1 pc Mounting Kit
- 1-2 pcs optical adapters (if ordered)
- 1-2 pcs pigtails (if ordered)

Installation



SCsx adapter

Bottom of TBWOS with one SCsx adapter installed.



Splice cassette

Splice cassette and pigtail guiding.

The wall outlet is protected with a plastic bag including mounting kit

Ordering Information

Empty Wall Outlet

Description	Type	ec-Article Nr.:
Wall Outlet Mini for 2 SCsx adapters, empty		EC05.200010.000

Assembled with adapters only

Wall Outlet Mini with 1 SC/UPCsx adapter		EC05.200010.011
Wall Outlet Mini with 1 SC/APCsx adapter		EC05.200010.013
Wall Outlet Mini with 1 SC/UPCsx swing shutter adapter		EC05.200010.039
Wall Outlet Mini with 1 SC/APCsx swing shutter adapter		EC05.200010.041
Wall Outlet Mini with 1 SC/UPC and 1 SC/APCsx adapter		EC05.200010.001
Wall Outlet Mini with 1 SC/UPC and 1 SC/APCsx swing shutter adapter		EC05.200010.033
Wall Outlet Mini with 2 SC/UPCsx adapters		EC05.200010.003
Wall Outlet Mini with 2 SC/APCsx adapters		EC05.200010.005
Wall Outlet Mini with 2 SC/UPCsx swing shutter adapters		EC05.200010.035
Wall Outlet Mini with 2 SC/APCsx swing shutter adapters		EC05.200010.037

Assembled with adapters and pigtails

Wall Outlet Mini with 1 SC/UPCsx adapter + pigtail		EC05.200010.012
Wall Outlet Mini with 1 SC/APCsx adapter + pigtail		EC05.200010.014
Wall Outlet Mini with 1 SC/UPCsx swing shutter adapter + pigtail		EC05.200010.040
Wall Outlet Mini with 1 SC/APCsx swing shutter adapter + pigtail		EC05.200010.042
Wall Outlet Mini with 1 SC/UPC and 1 SC/APCsx adapter + 2 pigtails		EC05.200010.002
Wall Outlet Mini with 1 SC/UPC and 1 SC/APCsx swing shutter adapter + 2 pigtails		EC05.200010.034
Wall Outlet Mini with 2 SC/UPCsx adapters + 2 pigtails		EC05.200010.004
Wall Outlet Mini with 2 SC/APCsx adapters + 2 pigtails		EC05.200010.006
Wall Outlet Mini with 2 SC/UPCsx swing shutter adapters + 2 pigtails		EC05.200010.036
Wall Outlet Mini with 2 SC/APCsx swing shutter adapters + 2 pigtails		EC05.200010.038